

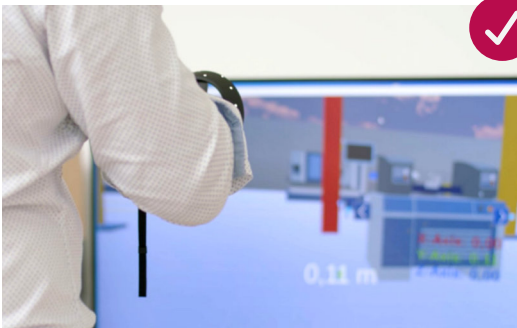
English

www.x-visual.com >

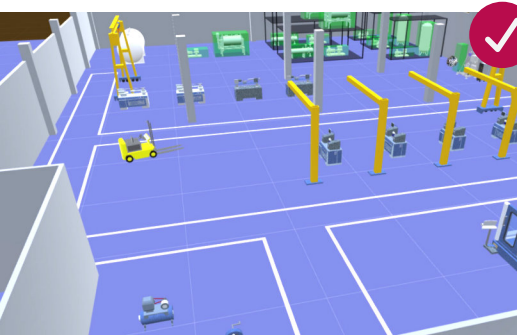
Visio 3D.

P&ID meets Virtual Reality

Intuitive layout of the plant with Microsoft Visio & visualization in the VR glasses Meta Quest



By visualizing the layout planning in 3D, customers and project participants are involved in the early phases of engineering and variants are discussed. Conflicts identified at an early stage help to avoid planning errors.



With the software PlantEngineer, you can create a 2D plant layout in Microsoft Visio based on the P&ID and directly generate a walk-through VR plant model without any 3D knowledge.

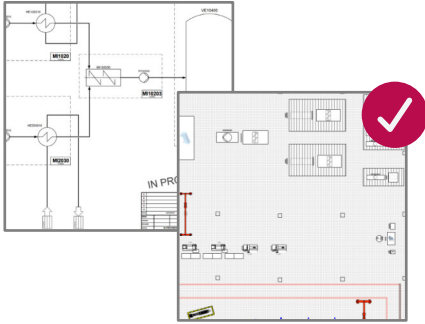
X-VISUAL
P&ID Software

Microsoft
Partner



Immerse yourself in the virtual plant!

Virtual reality already in the pre-engineering of process plants

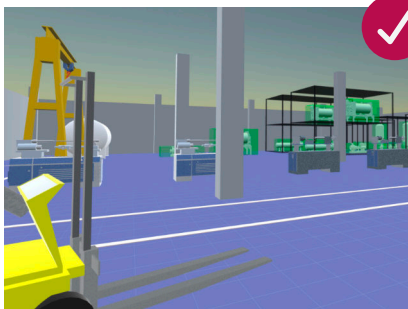


Create layout plans with little effort

Import functions for 3D models of the plant components from external catalogs or CAD systems enable the use of existing data. The floor plan of the building can be imported from other systems and easily edited. Imported 3D models are placed on the floor plan of the plant.

Visualization of building & plant models in VR

A 3D model is generated on the basis of the layout plan, in which the user can move freely with the VR application and move, add or delete plant components. This gives the user an initial idea of the planning at an early stage.



Editing the plant layout in VR

Plant components are moved or scaled in virtual reality. New components can be added and additional properties can be displayed or edited. Changes are synchronized directly with the 2D view.

Recognizing conflicts and variants early on

The 3D layout planning makes it easy to run through the installation steps and immediately visualize space requirements and safety zones. The designed plant becomes spatially comprehensible. Optimization in pre-engineering increases planning quality and avoids errors. Planning errors identified at an early stage lead to considerable cost savings.